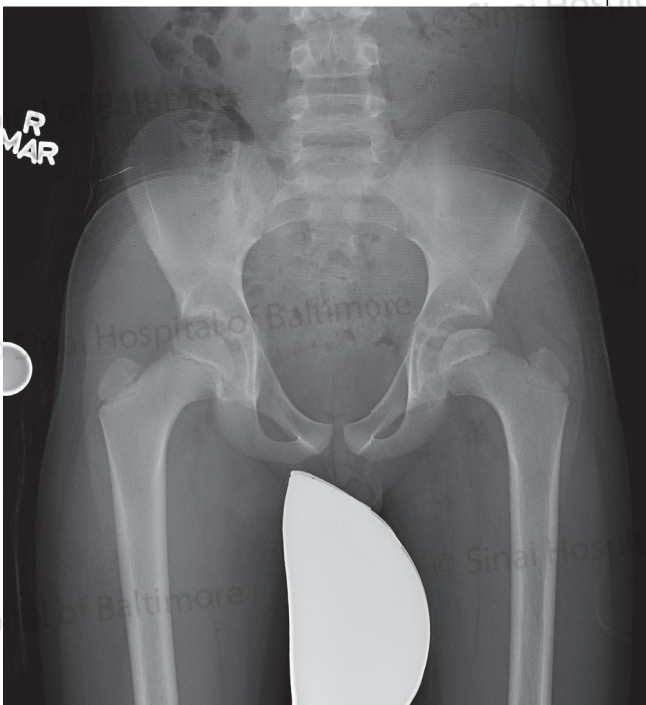


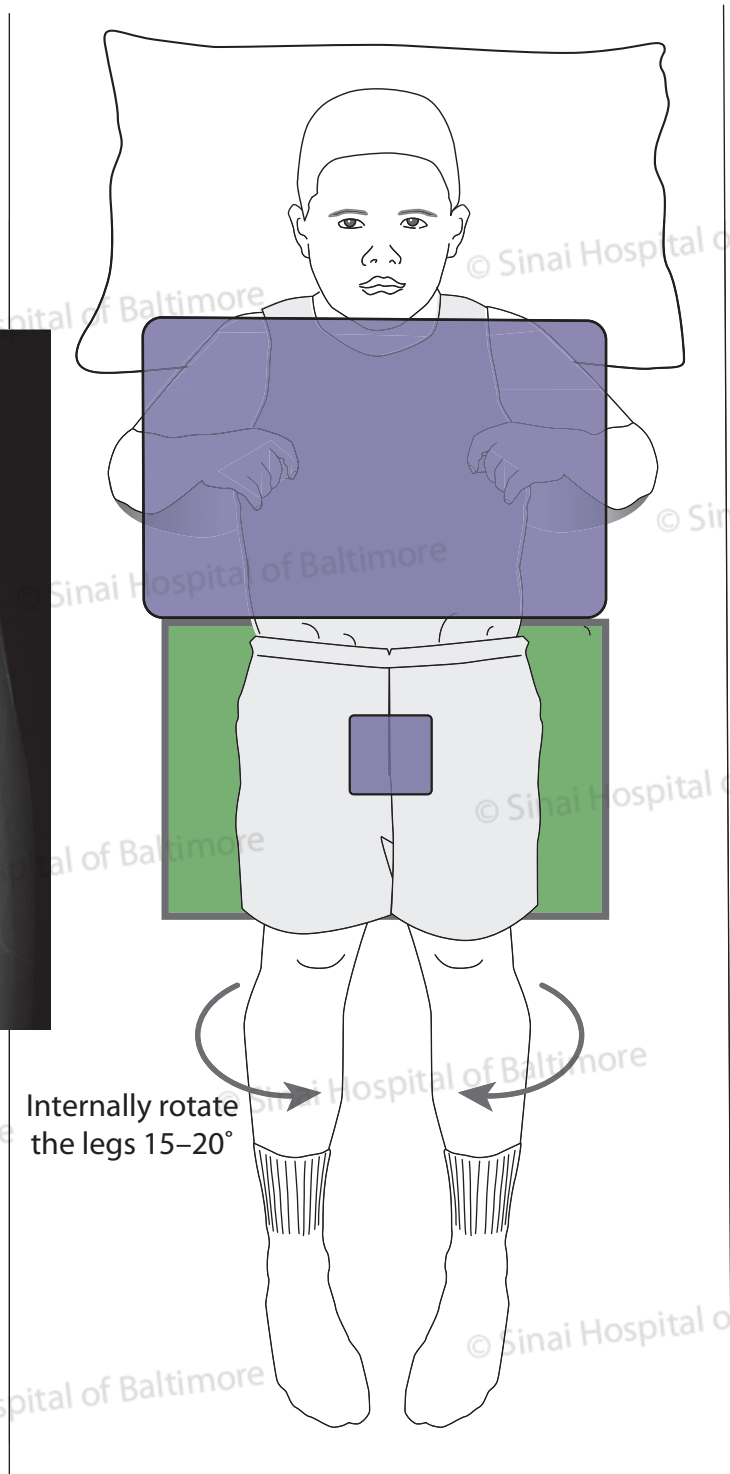


## Three X-ray Views of the Pelvis

### Anteroposterior (AP) Pelvis Supine (Lying Down) or Standing X-ray View Position

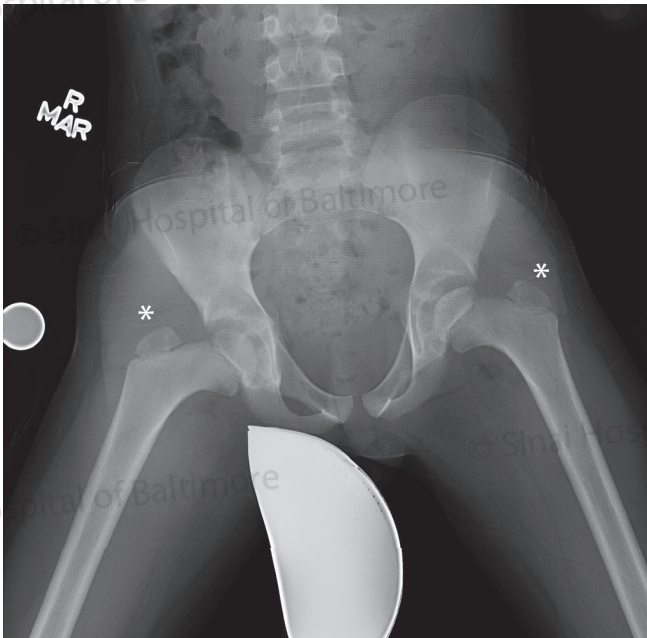


-  Radiographic plate
-  Radio-opaque shield

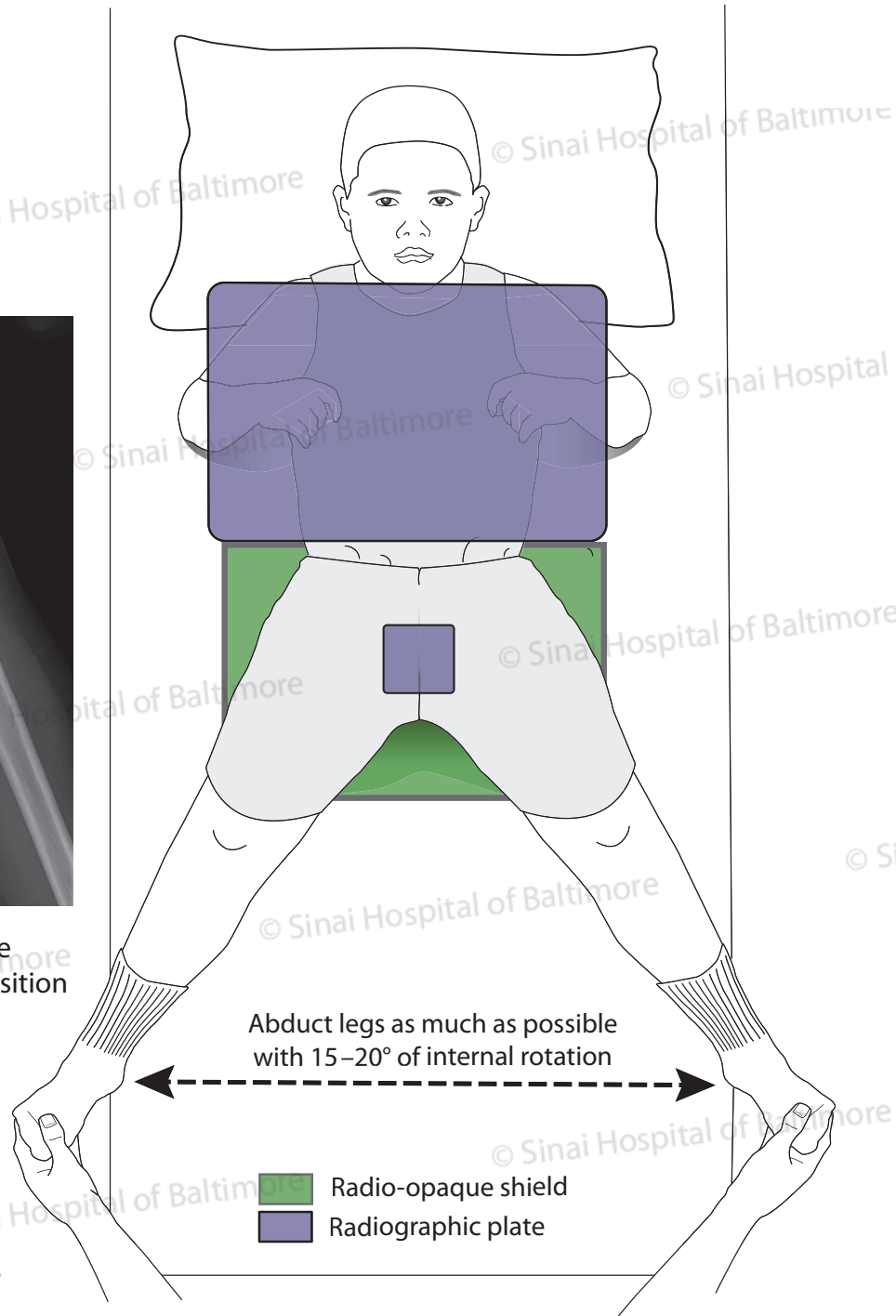


## Continued, Three X-ray Views of the Pelvis

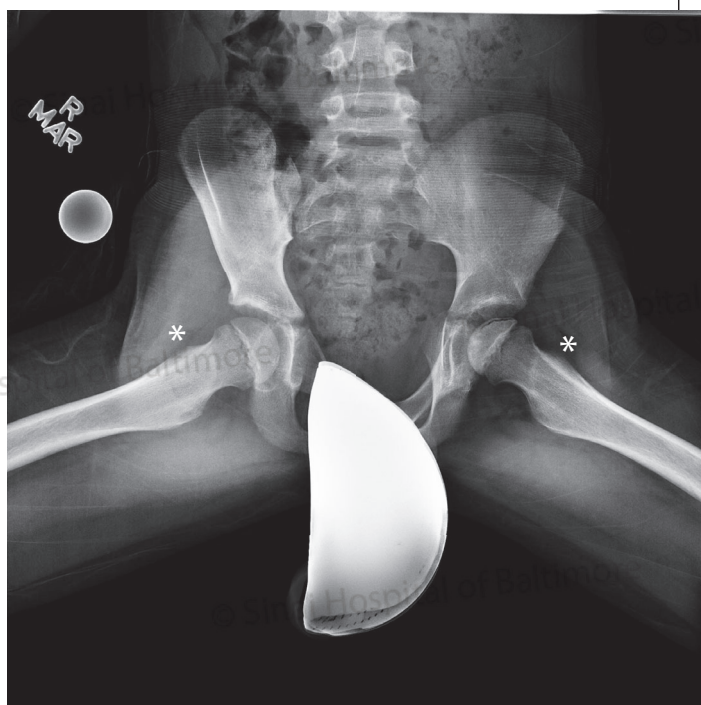
### Maximum Abduction X-ray View Position



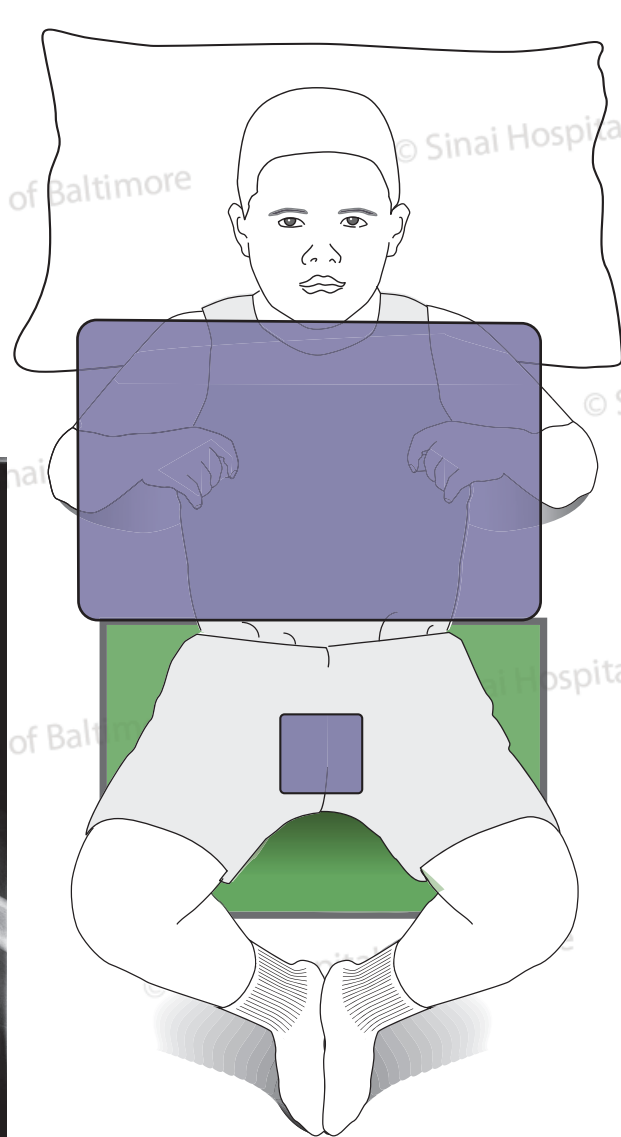
\* Note: The greater trochanter is visible when the patient is in the correct position





### Frog-leg X-ray View Position



\* Note: The greater trochanter is not visible when the patient is in the correct position.



-  Radiographic plate
-  Radio-opaque shield